



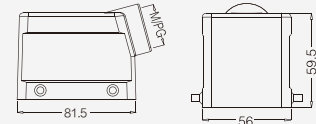
## 32A 金属外壳 Metal Hoods &amp; Housings

## 防护等级 Degree of protection: IP65

## 上壳 侧出线 Hoods, side entry



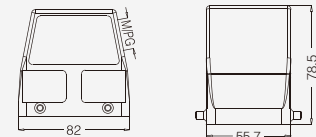
螺纹 Thread	型号 Type	订货号 Part Number
M25	H32A-SE-4B-M25	19200321521
PG21	H32A-SE-4B-PG21	09200321520



## 上壳 侧出线 高结构 Hoods, side entry, high construction



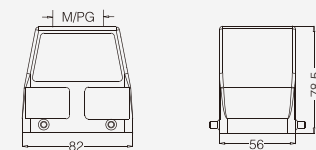
螺纹 Thread	型号 Type	订货号 Part Number
M32	H32A-SEH-4B-M32	19200320527
PG21	H32A-SEH-4B-PG21	09200320520
PG29	H32A-SEH-4B-PG29	09200320521



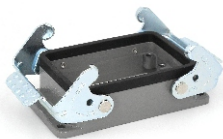
## 上壳 顶出线 高结构 Hoods, top entry, high construction



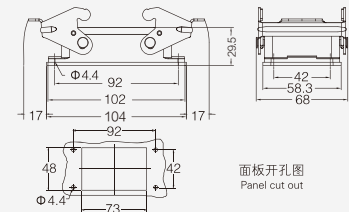
螺纹 Thread	型号 Type	订货号 Part Number
M25	H32A-TEH-4B-M25	19200320426
M32	H32A-TEH-4B-M32	19200320427
PG21	H32A-TEH-4B-PG21	09200320420
PG29	H32A-TEH-4B-PG29	09200320421



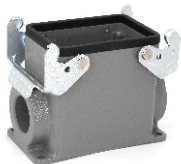
## 不封底下壳 Housings, bulkhead mounting



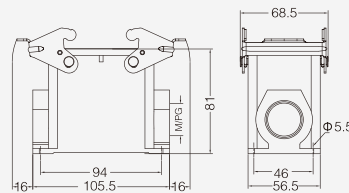
螺纹 Thread	型号 Type	订货号 Part Number
---	H32A-BK-2L	09200320301


 面板开孔图  
 Panel cut out

## 封底下壳 Housings, surface mounting



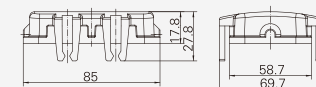
螺纹 Thread	型号 Type	订货号 Part Number
M25	H32A-SF-2L-M25	19200320231
M32	H32A-SF-2L-M32	19200320232
2M32	H32A-SF-2L-2M32	19200320272
PG21	H32A-SF-2L-PG21	09200320230
2PG21	H32A-SF-2L-2PG21	09200320270
PG29	H32A-SF-2L-PG29	09200320231
2PG29	H32A-SF-2L-2PG29	09200320271



## 塑料防护盖 4卡扣 Protection covers, plastic cover 4 clamps



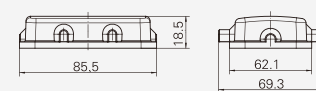
接线方式 Connect way	描述 Applications	型号 Type	订货号 Part Number
	用于上壳 for hoods	H32A-CV-4C	09200328001



## 塑料防护盖 Protection covers, plastic cover



接线方式 Connect way	描述 Applications	型号 Type	订货号 Part Number
	用于电缆对接 For housings	H32A-CV-4B/1	09200328030
	用于下壳 For housings	H32A-CV-4B/2	09200328031





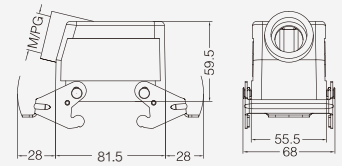
## 32A 金属外壳 Metal Hoods &amp; Housings

## 防护等级 Degree of protection: IP65

## 上壳 侧出线 Hoods, side entry



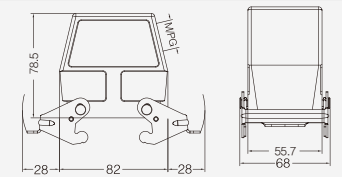
螺纹 Thread	型号 Type	订货号 Part Number
M25	H32A-SE-2L-M25	19200321531
PG21	H32A-SE-2L-PG21	09200321530



## 上壳 侧出线 高结构 Hoods, side entry, high construction



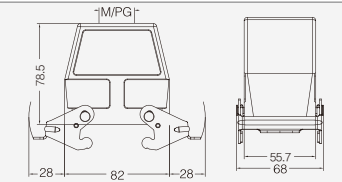
螺纹 Thread	型号 Type	订货号 Part Number
M32	H32A-SEH-2L-M32	19200320537
PG21	H32A-SEH-2L-PG21	09200320530
PG29	H32A-SEH-2L-PG29	09200320531



## 上壳 顶出线 高结构 Hoods, top entry, high construction



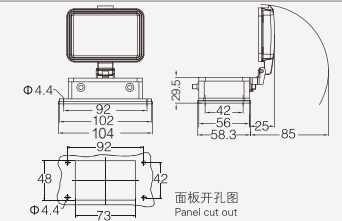
螺纹 Thread	型号 Type	订货号 Part Number
M25	H32A-TEH-2L-M25	19200320447
M32	H32A-TEH-2L-M32	19200320437
PG21	H32A-TEH-2L-PG21	09200320430
PG29	H32A-TEH-2L-PG29	09200320431



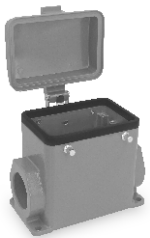
## 不封底下壳 Housings, bulkhead mounting



螺纹 Thread	型号 Type	订货号 Part Number
---	H32A-BK-4B	09200320202
---	带塑料盖 With plastic cover	09200320302
---	带金属盖 With metal cover	09200320402



## 封底下壳 Housings, surface mounting



螺纹 Thread	型号 Type	订货号 Part Number
M25	H32A-SF-4B-M25	19200320251
M32	H32A-SF-4B-M32	19200320258
2M32	H32A-SF-4B-2M32	19200320298
PG21	H32A-SF-4B-PG21	09200320252
2PG21	H32A-SF-4B-2PG21	09200320292
PG29	H32A-SF-4B-PG29	09200320253
2PG29	H32A-SF-4B-2PG29	09200320293
	带塑料盖 With plastic cover	
M25	H32A-SF-4B-CV-M25	19200320226
M32	H32A-SF-4B-CV-M32	19200320227
2M32	H32A-SF-4B-CV-2M32	19200320267
PG21	H32A-SF-4B-CV-PG21	09200320220
2PG21	H32A-SF-4B-CV-2PG21	09200320260
PG29	H32A-SF-4B-CV-PG29	09200320221
2PG29	H32A-SF-4B-CV-2PG29	09200320261
	带金属盖 With metal cover	
M25	H32A-SF-4B-MCV-M25	19200320696
M32	H32A-SF-4B-MCV-M32	19200320698
2M32	H32A-SF-4B-MCV-2M32	19200320699
PG21	H32A-SF-4B-MCV-PG21	09200320652
2PG21	H32A-SF-4B-MCV-2PG21	09200320692
PG29	H32A-SF-4B-MCV-PG29	09200320653
2PG29	H32A-SF-4B-MCV-2PG29	09200320693

