

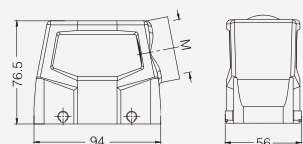
16B 塑料外壳 Plastic Hoods & Housings

防护等级 Degree of protection : IP65

上壳 侧出线 高结构 Hoods, side entry, high construction



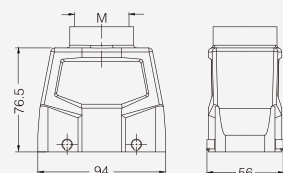
| 螺纹 Thread | 型号 Type | 订货号 Part Number |
|-----------|-------------------|-----------------|
| M32 | H16B.P-SEH-4B-M32 | 19300160111 |
| M40 | H16B.P-SEH-4B-M40 | 19300160112 |



上壳 顶出线 高结构 Hoods, top entry, high construction



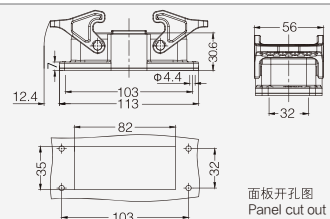
| 螺纹 Thread | 型号 Type | 订货号 Part Number |
|-----------|-------------------|-----------------|
| M32 | H16B.P-TEH-4B-M32 | 19300160121 |
| M40 | H16B.P-TEH-4B-M40 | 19300160122 |



不封底下壳 Housings, bulkhead mounting



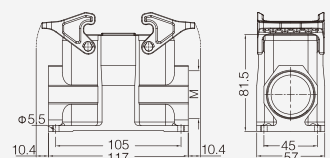
| 螺纹 Thread | 型号 Type | 订货号 Part Number |
|-----------|--------------|-----------------|
| --- | H16B.P-BK-2L | 09300160300 |



封底下壳 高结构 Housings, surface mounting, high construction



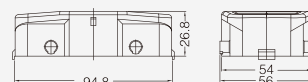
| 螺纹 Thread | 型号 Type | 订货号 Part Number |
|-----------|--------------------|-----------------|
| M32 | H16B.P-SFH-2L-M32 | 19300160132 |
| 2M32 | H16B.P-SFH-2L-2M32 | 19300160136 |
| M40 | H16B.P-SFH-2L-M40 | 19300160133 |
| 2M40 | H16B.P-SFH-2L-2M40 | 19300160137 |



防护盖 Protection covers, metal



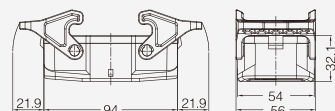
| 螺纹 Thread | 型号 Type | 订货号 Part Number |
|-----------|----------------|-----------------|
| --- | H16B.P-CV-4B/2 | 09300160140 |



防护盖 Protection covers, metal



| 螺纹 Thread | 型号 Type | 订货号 Part Number |
|-----------|----------------|-----------------|
| --- | H16B.P-CV-2L/1 | 09300160145 |



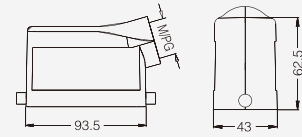
16B金属外壳 Metal Hoods & Housings

防护等级 Degree of protection : IP65

上壳 侧出线 Hoods, side entry



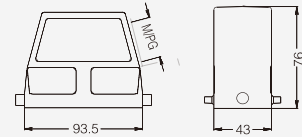
| 螺纹 Thread | 型号 Type | 订货号 Part Number |
|-----------|-----------------|-----------------|
| M25 | H16B-SE-2B-M25 | 19300161541 |
| M32 | H16B-SE-2B-M32 | 19300161542 |
| PG21 | H16B-SE-2B-PG21 | 09300161540 |



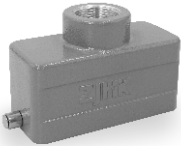
上壳 侧出线 高结构 Hoods, side entry, high construction



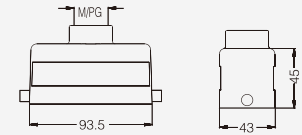
| 螺纹 Thread | 型号 Type | 订货号 Part Number |
|-----------|------------------|-----------------|
| M32 | H16B-SEH-2B-M32 | 19300160547 |
| M40 | H16B-SEH-2B-M40 | 19300160548 |
| PG21 | H16B-SEH-2B-PG21 | 09300160540 |
| PG29 | H16B-SEH-2B-PG29 | 09300160541 |



上壳 顶出线 Hoods, top entry



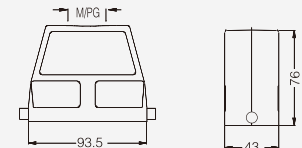
| 螺纹 Thread | 型号 Type | 订货号 Part Number |
|-----------|-----------------|-----------------|
| M25 | H16B-TE-2B-M25 | 19300161441 |
| M32 | H16B-TE-2B-M32 | 19300161442 |
| PG21 | H16B-TE-2B-PG21 | 09300161440 |



上壳 顶出线 高结构 Hoods, top entry, high construction



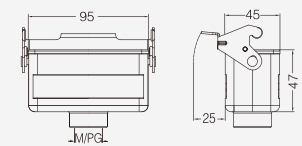
| 螺纹 Thread | 型号 Type | 订货号 Part Number |
|-----------|------------------|-----------------|
| M32 | H16B-TEH-2B-M32 | 19300160447 |
| M40 | H16B-TEH-2B-M40 | 19300160448 |
| PG21 | H16B-TEH-2B-PG21 | 09300160440 |
| PG29 | H16B-TEH-2B-PG29 | 09300160441 |



飞线下壳 Housings, cable to cable



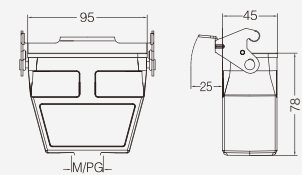
| 螺纹 Thread | 型号 Type | 订货号 Part Number |
|-----------|------------------|-----------------|
| M25 | H16B-CCT-1L-M25 | 19300161751 |
| M32 | H16B-CCT-1L-M32 | 19300161752 |
| PG21 | H16B-CCT-1L-PG21 | 09300161750 |



飞线下壳 高结构 Housings, cable to cable, high construction



| 螺纹 Thread | 型号 Type | 订货号 Part Number |
|-----------|-------------------|-----------------|
| M32 | H16B-CCTH-1L-M32 | 19300160757 |
| M40 | H16B-CCTH-1L-M40 | 19300160758 |
| PG21 | H16B-CCTH-1L-PG21 | 09300160750 |
| PG29 | H16B-CCTH-1L-PG29 | 09300160751 |



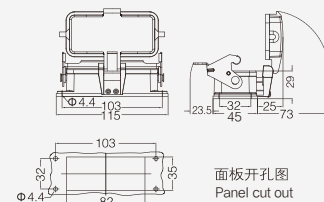
16B 金属外壳 Metal Hoods & Housings

防护等级 Degree of protection : IP65

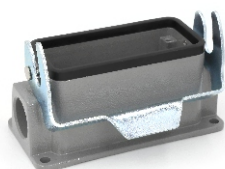
不封底下壳 Housings, bulkhead mounting



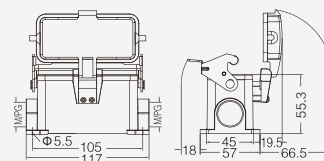
| 螺纹 Thread | 型号 Type | 订货号 Part Number |
|-----------|-------------------------|-----------------|
| --- | H16B-BK-1L | 09300160307 |
| | 带塑料盖 With plastic cover | |
| --- | H16B-BK-1L-CV | 09300160306 |
| | 带金属盖 With metal cover | |
| --- | H16B-BK-1L-MCV | 09300160318 |



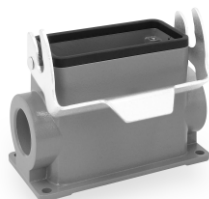
封底下壳 Housings, surface mounting



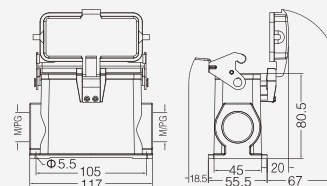
| 螺纹 Thread | 型号 Type | 订货号 Part Number |
|-----------|-------------------------|-----------------|
| M25 | H16B-SF-1L-M25 | 19300161251 |
| 2M25 | H16B-SF-1L-2M25 | 19300161291 |
| PG21 | H16B-SF-1L-PG21 | 09300161250 |
| 2PG21 | H16B-SF-1L-2PG21 | 09300161290 |
| | 带塑料盖 With plastic cover | |
| M25 | H16B-SF-1L-CV-M25 | 19300161256 |
| 2M25 | H16B-SF-1L-CV-2M25 | 19300161296 |
| PG21 | H16B-SF-1L-CV-PG21 | 09300161255 |
| 2PG21 | H16B-SF-1L-CV-2PG21 | 09300161295 |
| | 带金属盖 With metal cover | |
| M25 | H16B-SF-1L-MCV-M25 | 19300162256 |
| 2M25 | H16B-SF-1L-MCV-2M25 | 19300162296 |
| PG21 | H16B-SF-1L-MCV-PG21 | 09300162255 |
| 2PG21 | H16B-SF-1L-MCV-2PG21 | 09300162295 |



封底下壳 高结构 Housings, surface mounting, high construction



| 螺纹 Thread | 型号 Type | 订货号 Part Number |
|-----------|-------------------------|-----------------|
| M32 | H16B-SFH-1L-M32 | 19300160252 |
| 2M25 | H16B-SFH-1L-2M25 | 19300160291 |
| 2M32 | H16B-SFH-1L-2M32 | 19300160292 |
| PG21 | H16B-SFH-1L-PG21 | 09300160250 |
| 2PG21 | H16B-SFH-1L-2PG21 | 09300160290 |
| PG29 | H16B-SFH-1L-PG29 | 09300160251 |
| 2PG29 | H16B-SFH-1L-2PG29 | 09300160291 |
| | 带塑料盖 With plastic cover | |
| M32 | H16B-SFH-1L-CV-M32 | 19300160257 |
| 2M32 | H16B-SFH-1L-CV-2M32 | 19300160297 |
| PG21 | H16B-SFH-1L-CV-PG21 | 09300160255 |
| 2PG21 | H16B-SFH-1L-CV-2PG21 | 09300160295 |
| PG29 | H16B-SFH-1L-CV-PG29 | 09300160256 |
| 2PG29 | H16B-SFH-1L-CV-2PG29 | 09300160296 |
| | 带金属盖 With metal cover | |
| M32 | H16B-SFH-1L-MCV-M32 | 19300167257 |
| 2M32 | H16B-SFH-1L-MCV-2M32 | 19300167297 |
| PG21 | H16B-SFH-1L-MCV-PG21 | 09300162257 |
| 2PG21 | H16B-SFH-1L-MCV-2PG21 | 09300162297 |
| PG29 | H16B-SFH-1L-MCV-PG29 | 09300162258 |
| 2PG29 | H16B-SFH-1L-MCV-2PG29 | 09300162298 |



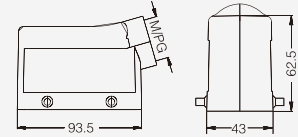
16B金属外壳 Metal Hoods & Housings

防护等级 Degree of protection : IP65

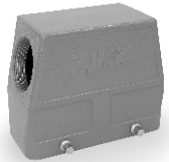
上壳 侧出线 Hoods, side entry



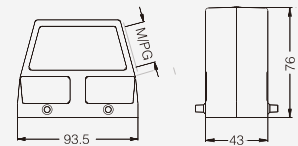
| 螺纹 Thread | 型号 Type | 订货号 Part Number |
|-----------|-----------------|-----------------|
| M25 | H16B-SE-4B-M25 | 19300161521 |
| M32 | H16B-SE-4B-M32 | 19300161522 |
| PG21 | H16B-SE-4B-PG21 | 09300161520 |



上壳 侧出线 高结构 Hoods, side entry, high construction



| 螺纹 Thread | 型号 Type | 订货号 Part Number |
|-----------|------------------|-----------------|
| M25 | H16B-SEH-4B-M25 | 19300160526 |
| M32 | H16B-SEH-4B-M32 | 19300160527 |
| M40 | H16B-SEH-4B-M40 | 19300160528 |
| PG21 | H16B-SEH-4B-PG21 | 09300160520 |
| PG29 | H16B-SEH-4B-PG29 | 09300160521 |

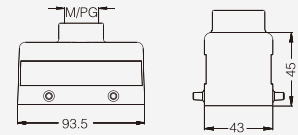


我司可提供顶部、侧面同时出线的非标品, 详见P17-08
We can provide non-standard products with both top&side entry, see P17-08

上壳 顶出线 Hoods, top entry



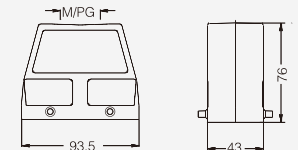
| 螺纹 Thread | 型号 Type | 订货号 Part Number |
|-----------|-----------------|-----------------|
| M25 | H16B-TE-4B-M25 | 19300161421 |
| M32 | H16B-TE-4B-M32 | 19300161422 |
| PG21 | H16B-TE-4B-PG21 | 09300161420 |



上壳 顶出线 高结构 Hoods, top entry, high construction



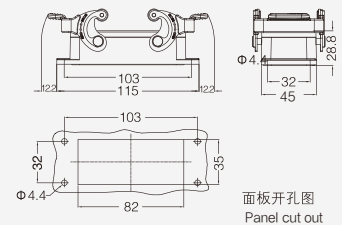
| 螺纹 Thread | 型号 Type | 订货号 Part Number |
|-----------|-------------------|-----------------|
| M32 | H16B-TEH-4B-M32 | 19300160427 |
| M40 | H16B-TEH-4B-M40 | 19300160428 |
| PG21 | H16B-TEH-4B-PG21 | 09300160420 |
| PG29 | H16B-TEH-4B-PG29 | 09300160421 |
| 2M25 | H16B-TEH-4B-2M25 | 19300160466 |
| 2PG16 | H16B-TEH-4B-2PG16 | 09300160461 |
| 2PG21 | H16B-TEH-4B-2PG21 | 09300160462 |



不封底下壳 Housings, bulkhead mounting



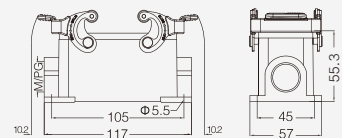
| 螺纹 Thread | 型号 Type | 订货号 Part Number |
|-----------|------------|-----------------|
| --- | H16B-BK-2L | 09300160301 |



封底下壳 Housings, surface mounting



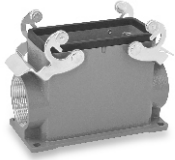
| 螺纹 Thread | 型号 Type | 订货号 Part Number |
|-----------|------------------|-----------------|
| M25 | H16B-SF-2L-M25 | 19300161231 |
| 2M25 | H16B-SF-2L-2M25 | 19300161271 |
| PG21 | H16B-SF-2L-PG21 | 09300161230 |
| 2PG21 | H16B-SF-2L-2PG21 | 09300161270 |



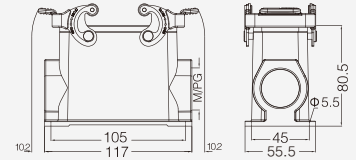
16B 金属外壳 Metal Hoods & Housings

防护等级 Degree of protection : IP65

封底下壳 高结构 Housings, surface mounting, high construction



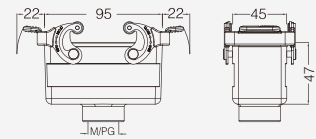
| 螺纹 Thread | 型号 Type | 订货号 Part Number |
|-----------|-------------------|-----------------|
| 2M25 | H16B-SFH-2L-2M25 | 19300160271 |
| M32 | H16B-SFH-2L-M32 | 19300160232 |
| 2M32 | H16B-SFH-2L-2M32 | 19300160272 |
| 2M40 | H16B-SFH-2L-2M40 | 19300160273 |
| PG21 | H16B-SFH-2L-PG21 | 09300160230 |
| 2PG21 | H16B-SFH-2L-2PG21 | 09300160270 |
| PG29 | H16B-SFH-2L-PG29 | 09300160231 |
| 2PG29 | H16B-SFH-2L-2PG29 | 09300160271 |



飞线下壳 Housings, cable to cable



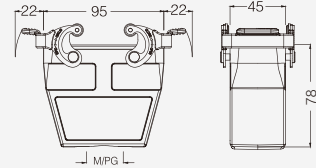
| 螺纹 Thread | 型号 Type | 订货号 Part Number |
|-----------|------------------|-----------------|
| M25 | H16B-CCT-2L-M25 | 19300161731 |
| M32 | H16B-CCT-2L-M32 | 19300161732 |
| PG21 | H16B-CCT-2L-PG21 | 09300161730 |



飞线下壳 高结构 Housings, cable to cable, high construction



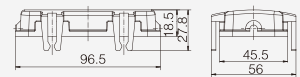
| 螺纹 Thread | 型号 Type | 订货号 Part Number |
|-----------|-------------------|-----------------|
| M25 | H16B-CCTH-2L-M25 | 19300160736 |
| M32 | H16B-CCTH-2L-M32 | 19300160737 |
| M40 | H16B-CCTH-2L-M40 | 19300160738 |
| PG21 | H16B-CCTH-2L-PG21 | 09300160730 |
| PG29 | H16B-CCTH-2L-PG29 | 09300160731 |



塑料防护盖 4卡扣 Protection covers, plastic



| 接线方式 Connect way | 描述 Applications | 型号 Type | 订货号 Part Number |
|---------------------|--------------------|------------|--------------------|
| --- | 用于上壳 | H16B-CV-4C | 09300165401 |



塑料防护盖 Protection covers, plastic



| 接线方式 Connect way | 描述 Applications | 型号 Type | 订货号 Part Number |
|---------------------|--|--------------|--------------------|
| | 塑料盖/用于飞线下壳 For Housings, cable to cable | H16B-CV-4B/1 | 09300165427 |
| | 塑料盖/用于不封底,封底下壳 For housing, bulkhead/ surface mounting | H16B-CV-4B/2 | 09300165428 |



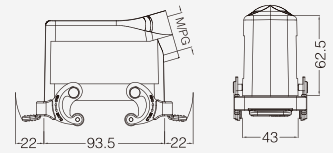
16B金属外壳 Metal Hoods & Housings

防护等级 Degree of protection : IP65

上壳 侧出线 Hoods, side entry



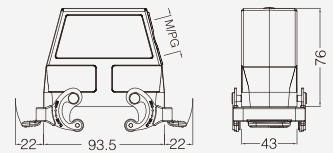
| 螺纹 Thread | 型号 Type | 订货号 Part Number |
|-----------|-----------------|-----------------|
| M25 | H16B-SE-2L-M25 | 19300161531 |
| M32 | H16B-SE-2L-M32 | 19300161532 |
| PG21 | H16B-SE-2L-PG21 | 09300161530 |



上壳 侧出线 高结构 Hoods, side entry, high construction



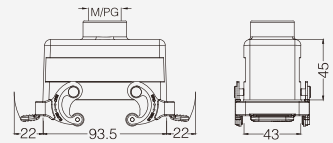
| 螺纹 Thread | 型号 Type | 订货号 Part Number |
|-----------|------------------|-----------------|
| M25 | H16B-SEH-2L-M25 | 19300160536 |
| M32 | H16B-SEH-2L-M32 | 19300160537 |
| M40 | H16B-SEH-2L-M40 | 19300160538 |
| PG21 | H16B-SEH-2L-PG21 | 09300160530 |
| PG29 | H16B-SEH-2L-PG29 | 09300160531 |



上壳 顶出线 Hoods, top entry



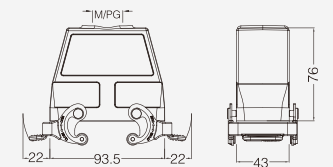
| 螺纹 Thread | 型号 Type | 订货号 Part Number |
|-----------|-----------------|-----------------|
| M25 | H16B-TE-2L-M25 | 19300161431 |
| M32 | H16B-TE-2L-M32 | 19300161432 |
| PG21 | H16B-TE-2L-PG21 | 09300161430 |



上壳 顶出线 高结构 Hoods, top entry, high construction



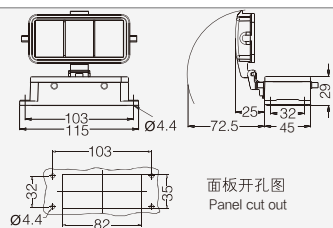
| 螺纹 Thread | 型号 Type | 订货号 Part Number |
|-----------|------------------|-----------------|
| M32 | H16B-TEH-2L-M32 | 19300160437 |
| M40 | H16B-TEH-2L-M40 | 19300160438 |
| PG21 | H16B-TEH-2L-PG21 | 09300160430 |
| PG29 | H16B-TEH-2L-PG29 | 09300160431 |



不封底下壳 Housings, bulkhead mounting



| 螺纹 Thread | 型号 Type | 订货号 Part Number |
|-----------|-------------------------|-----------------|
| --- | H16B-BK-4B | 09300160300 |
| --- | 带塑料盖 With plastic cover | |
| --- | H16B-BK-4B-CV | 09300160302 |
| --- | 带金属盖 With metal cover | |
| --- | H16B-BK-4B-MCV | 09300160317 |





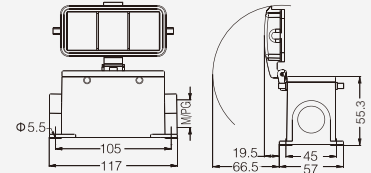
16B 金属外壳 Metal Hoods & Housings

防护等级 Degree of protection : IP65

封底下壳 Housings, surface mounting



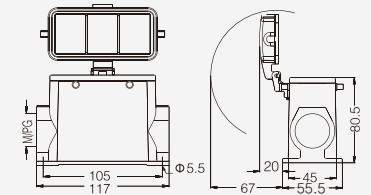
| 螺纹 Thread | 型号 Type | 订货号 Part Number |
|-----------|-------------------------|-----------------|
| M25 | H16B-SF-4B-M25 | 19300161126 |
| 2M25 | H16B-SF-4B-2M25 | 19300161166 |
| PG21 | H16B-SF-4B-PG21 | 09300161120 |
| 2PG21 | H16B-SF-4B-2PG21 | 09300161160 |
| | 带塑料盖 With plastic cover | |
| M25 | H16B-SF-4B-CV-M25 | 19300161226 |
| 2M25 | H16B-SF-4B-CV-2M25 | 19300161266 |
| PG21 | H16B-SF-4B-CV-PG21 | 09300161220 |
| 2PG21 | H16B-SF-4B-CV-2PG21 | 09300161260 |
| | 带金属盖 With metal cover | |
| M25 | H16B-SF-4B-MCV-M25 | 19300162226 |
| 2M25 | H16B-SF-4B-MCV-2M25 | 19300162266 |
| PG21 | H16B-SF-4B-MCV-PG21 | 09300162220 |
| 2PG21 | H16B-SF-4B-MCV-2PG21 | 09300162260 |



封底下壳 高结构 Housings, surface mounting, high construction



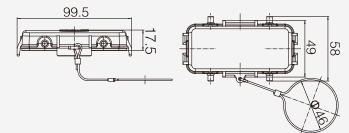
| 螺纹 Thread | 型号 Type | 订货号 Part Number |
|-----------|-------------------------|-----------------|
| M25 | H16B-SFH-4B-M32 | 19300160127 |
| M32 | H16B-SFH-4B-2M32 | 19300160167 |
| M40 | H16B-SFH-4B-PG21 | 09300160120 |
| PG21 | H16B-SFH-4B-2PG21 | 09300160160 |
| PG29 | H16B-SFH-4B-PG29 | 09300160121 |
| 2PG29 | H16B-SFH-4B-2PG29 | 09300160161 |
| | 带塑料盖 With plastic cover | |
| M32 | H16B-SFH-4B-CV-M32 | 19300160227 |
| 2M32 | H16B-SFH-4B-CV-2M32 | 19300160267 |
| PG21 | H16B-SFH-4B-CV-PG21 | 09300160220 |
| 2PG21 | H16B-SFH-4B-CV-2PG21 | 09300160260 |
| PG29 | H16B-SFH-4B-CV-PG29 | 09300160221 |
| 2PG29 | H16B-SFH-4B-CV-2PG29 | 09300160261 |
| | 带金属盖 With metal cover | |
| M32 | H16B-SFH-4B-MCV-M32 | 19300160327 |
| 2M32 | H16B-SFH-4B-MCV-2M32 | 19300160367 |
| PG21 | H16B-SFH-4B-MCV-PG21 | 09300160320 |
| 2PG21 | H16B-SFH-4B-MCV-2PG21 | 09300160360 |
| PG29 | H16B-SFH-4B-MCV-PG29 | 09300160321 |
| 2PG29 | H16B-SFH-4B-MCV-2PG29 | 09300160361 |



防护盖 Protection covers, metal



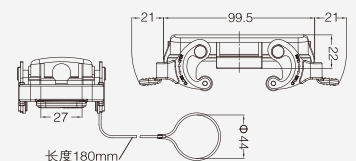
| 接线方式 Connect way | 描述 Applications | 型号 Type | 订货号 Part Number |
|---------------------|--------------------------|---------------|--------------------|
| | 金属盖/用于上壳 For hoods | H16B-MCV-4B/1 | 09300165426 |
| | 金属盖/用于下壳 For housings | H16B-MCV-4B/2 | 09300165425 |



防护盖 Protection covers, metal



| 接线方式 Connect way | 描述 Applications | 型号 Type | 订货号 Part Number |
|---------------------|--------------------------|----------------|--------------------|
| | 金属盖/用于上壳 For hoods | H16B-MCV-2L.1S | 09300165422 |
| | 金属盖/用于下壳 For housings | H16B-MCV-2L.2 | 09300165423 |



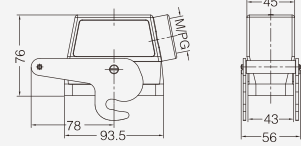
16B金属外壳 Metal Hoods & Housings

防护等级 Degree of protection : IP65

上壳 侧出线 高结构 Hoods, side entry, high construction



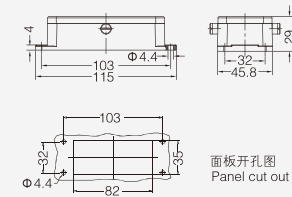
| 螺纹 Thread | 型号 Type | 订货号 Part Number |
|-----------|--------------------|-----------------|
| M25 | H16B-SEH-1L/C-M25 | 19300160586 |
| M32 | H16B-SEH-1L/C-M32 | 19300160587 |
| PG21 | H16B-SEH-1L/C-PG21 | 09300160580 |
| PG29 | H16B-SEH-1L/C-PG29 | 09300160581 |



不封底下壳 Housings, bulkhead mounting



| 螺纹 Thread | 型号 Type | 订货号 Part Number |
|-----------|--------------|-----------------|
| --- | H16B-BK-2B/C | 09300160381 |



上壳侧出线/顶出线 高结构 Hoods, side&top entry, high construction



型号为:H16B-SEH/TEH-4B-XX/XX
如有需要请与我司联系



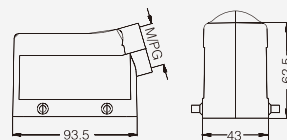
16B 金属外壳 适用于苛刻环境(耐腐蚀) Metal Hoods & Housings For higher environmental requirements

防护等级 Degree of protection : IP65

上壳 侧出线 Hoods, side entry



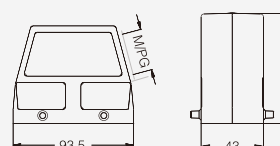
| 螺纹 Thread | 型号 Type | 订货号 Part Number |
|-----------|------------------|-----------------|
| M25 | H16B-MSE-4B-M25 | 19370161521 |
| PG21 | H16B-MSE-4B-PG21 | 09370161520 |



上壳 侧出线 高结构 Hoods, side entry, high construction



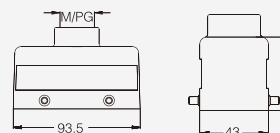
| 螺纹 Thread | 型号 Type | 订货号 Part Number |
|-----------|-------------------|-----------------|
| M32 | H16B-MSEH-4B-M32 | 19370160527 |
| M40 | H16B-MSEH-4B-M40 | 19370160528 |
| PG29 | H16B-MSEH-4B-PG29 | 09370160521 |



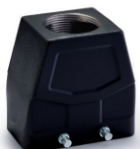
上壳 顶出线 Hoods, top entry



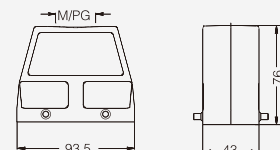
| 螺纹 Thread | 型号 Type | 订货号 Part Number |
|-----------|------------------|-----------------|
| M25 | H16B-MTE-4B-M25 | 19370161421 |
| PG21 | H16B-MTE-4B-PG21 | 09370161420 |



上壳 顶出线 高结构 Hoods, top entry, high construction



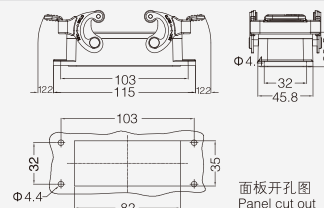
| 螺纹 Thread | 型号 Type | 订货号 Part Number |
|-----------|-------------------|-----------------|
| M32 | H16B-MTEH-4B-M32 | 19370160427 |
| PG29 | H16B-MTEH-4B-PG29 | 09370160421 |



不封底下壳 Housings, bulkhead mounting



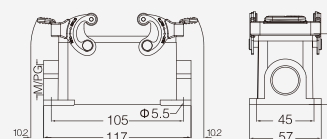
| 螺纹 Thread | 型号 Type | 订货号 Part Number |
|-----------|-------------|-----------------|
| --- | H16B-MBK-2L | 09370160301 |



封底下壳 Housings, surface mounting



| 螺纹 Thread | 型号 Type | 订货号 Part Number |
|-----------|------------------|-----------------|
| M25 | H16B-MSF-2L-M25 | 19370161231 |
| PG21 | H16B-MSF-2L-PG21 | 09370161230 |





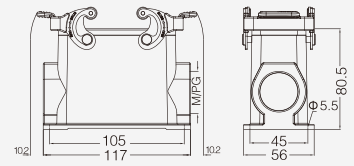
16B 金属外壳 适用于苛刻环境(耐腐蚀) Metal Hoods & Housings For higher environmental requirements

防护等级 Degree of protection : IP65

封底下壳 高结构 Housings, surface mounting, high construction



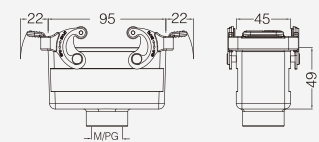
| 螺纹 Thread | 型号 Type | 订货号 Part Number |
|-----------|--------------------|-----------------|
| 2M32 | H16B-MSFH-2L-2M32 | 19370160272 |
| 2M40 | H16B-MSFH-2L-2M40 | 19370160273 |
| 2PG29 | H16B-MSFH-2L-2PG29 | 09370160271 |



飞线下壳 Housings, cable to cable



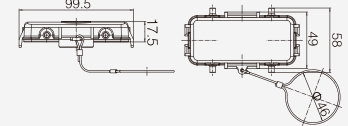
| 螺纹 Thread | 型号 Type | 订货号 Part Number |
|-----------|-------------------|-----------------|
| PG21 | H16B-MCCT-2L-PG21 | 09370161730 |



防护盖 Protection covers, metal



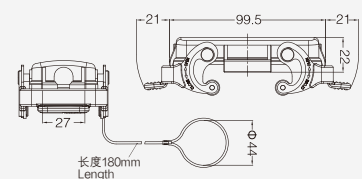
| 接线方式 Connect way | 描述 Applications | 型号 Type | 订货号 Part Number |
|------------------|--------------------------|----------------|-----------------|
| | 金属盖/用于上壳 For hoods | H16B-MMCV-4B/1 | 09370165404 |
| | 金属盖/用于下壳 For housings | H16B-MMCV-4B/2 | 09370165405 |



防护盖 Protection covers, metal



| 接线方式 Connect way | 描述 Applications | 型号 Type | 订货号 Part Number |
|------------------|--------------------------|-----------------|-----------------|
| | 金属盖/用于上壳 For hoods | H16B-MMCV-2L.1S | 09370165402 |
| | 金属盖/用于下壳 For housings | H16B-MMCV-2L.2S | 09370165403 |

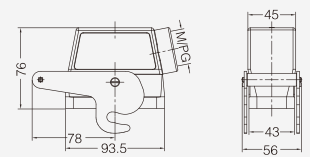


防护等级 Degree of protection : IP65

上壳 侧出线 高结构 Hoods, side entry, high construction



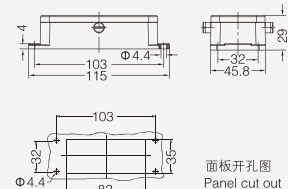
| 螺纹 Thread | 型号 Type | 订货号 Part Number |
|-----------|-------------------|-----------------|
| M32 | H16B-MSEH-1L-M32 | 19370160587 |
| PG21 | H16B-MSEH-1L-PG21 | 09370160587 |
| PG29 | H16B-MSEH-1L-PG29 | 09370160588 |



不封底下壳 Housings, bulkhead mounting



| 螺纹 Thread | 型号 Type | 订货号 Part Number |
|-----------|---------------|-----------------|
| --- | H16B-MBK-2B/C | 09370160381 |





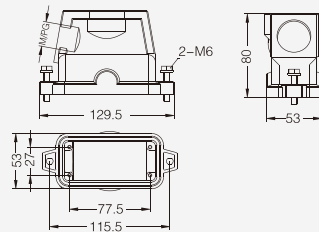
16B 高防护外壳 Hoods & Housings For Harsh Environmental Requirements

防护等级 Degree of protection : IP68

上壳 侧出线 高结构 Hoods, side entry, high construction



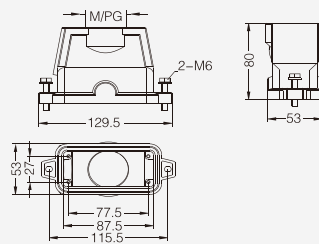
| 螺纹 Thread | 型号 Type | 订货号 Part Number |
|-----------|-------------------|-----------------|
| M25 | HP16B-SEH-2S-M25 | 19400160211 |
| M32 | HP16B-SEH-2S-M32 | 19400160212 |
| M40 | HP16B-SEH-2S-M40 | 19400160213 |
| PG21 | HP16B-SEH-2S-PG21 | 09400160212 |
| PG29 | HP16B-SEH-2S-PG29 | 09400160213 |



上壳 顶出线 高结构 Hoods, top entry, high construction



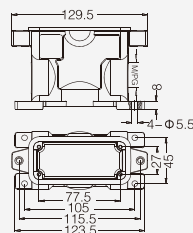
| 螺纹 Thread | 型号 Type | 订货号 Part Number |
|-----------|-------------------|-----------------|
| M25 | HP16B-TEH-2S-M25 | 19400160221 |
| M32 | HP16B-TEH-2S-M32 | 19400160222 |
| M40 | HP16B-TEH-2S-M40 | 19400160223 |
| M50 | HP16B-TEH-2S-M50 | 19400160224 |
| PG21 | HP16B-TEH-2S-PG21 | 09400160222 |
| PG29 | HP16B-TEH-2S-PG29 | 09400160223 |



封底下壳 Housings, surface mounting



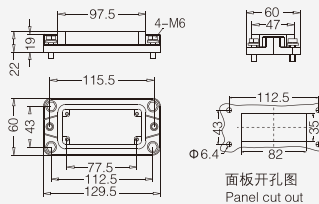
| 螺纹 Thread | 型号 Type | 订货号 Part Number |
|-----------|-------------------|-----------------|
| M25 | HP16B-SFH-2H-M25 | 19400160231 |
| M32 | HP16B-SFH-2H-M32 | 19400160232 |
| M40 | HP16B-SFH-2H-M40 | 19400160233 |
| PG21 | HP16B-SFH-2H-PG21 | 09400160232 |
| PG29 | HP16B-SFH-2H-PG29 | 09400160233 |



不封底下壳 Housings, bulkhead mounting



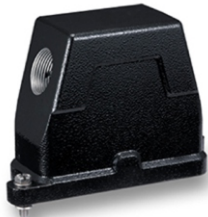
| 螺纹 Thread | 型号 Type | 订货号 Part Number |
|-----------|-------------|-----------------|
| --- | HP16B-BK-2H | 09400160201 |



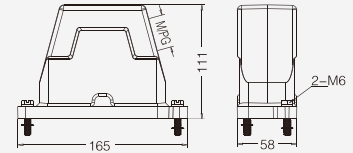
16B 高防护外壳 Hoods & Housings For Harsh Environmental Requirements

防护等级 Degree of protection : IP68

上壳 侧出线 高结构 Hoods, side entry, high construction



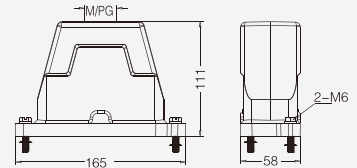
| 螺纹 Thread | 型号 Type | 订货号 Part Number |
|-----------|---------------------|-----------------|
| | 螺栓联锁 Screw locking | |
| M25 | HP16B/H-SEH-2S-M25 | 19400160511 |
| M32 | HP16B/H-SEH-2S-M32 | 19400160512 |
| M40 | HP16B/H-SEH-2S-M40 | 19400160513 |
| M50 | HP16B/H-SEH-2S-M50 | 19400160514 |
| PG21 | HP16B/H-SEH-2S-PG21 | 09400160512 |
| PG29 | HP16B/H-SEH-2S-PG29 | 09400160513 |
| PG36 | HP16B/H-SEH-2S-PG36 | 09400160514 |
| | 轴销联锁 Toggle locking | |
| M25 | HP16B/H-SEH-2T-M25 | 19400160501 |
| M32 | HP16B/H-SEH-2T-M32 | 19400160502 |
| M40 | HP16B/H-SEH-2T-M40 | 19400160503 |
| PG21 | HP16B/H-SEH-2T-PG21 | 09400160502 |
| PG29 | HP16B/H-SEH-2T-PG29 | 09400160503 |
| PG36 | HP16B/H-SEH-2T-PG36 | 09400160504 |



上壳 顶出线 高结构 Hoods, top entry, high construction



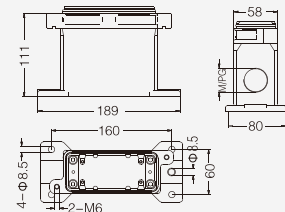
| 螺纹 Thread | 型号 Type | 订货号 Part Number |
|-----------|---------------------|-----------------|
| | 螺栓联锁 Screw locking | |
| M25 | HP16B/H-TEH-2S-M25 | 19400160411 |
| M32 | HP16B/H-TEH-2S-M32 | 19400160412 |
| M40 | HP16B/H-TEH-2S-M40 | 19400160413 |
| M50 | HP16B/H-TEH-2S-M50 | 19400160414 |
| PG21 | HP16B/H-TEH-2S-PG21 | 09400160412 |
| PG29 | HP16B/H-TEH-2S-PG29 | 09400160413 |
| PG36 | HP16B/H-TEH-2S-PG36 | 09400160414 |
| | 轴销联锁 Toggle locking | |
| M25 | HP16B/H-TEH-2T-M25 | 19400160401 |
| M32 | HP16B/H-TEH-2T-M32 | 19400160402 |
| M40 | HP16B/H-TEH-2T-M40 | 19400160403 |
| M50 | HP16B/H-TEH-2T-M50 | 19400160404 |
| PG21 | HP16B/H-TEH-2T-PG21 | 09400160402 |
| PG29 | HP16B/H-TEH-2T-PG29 | 09400160403 |
| PG36 | HP16B/H-TEH-2T-PG36 | 09400160404 |



封底下壳 高结构 Housings, surface mounting, high construction



| 螺纹 Thread | 型号 Type | 订货号 Part Number |
|-----------|---------------------|-----------------|
| | 螺栓联锁 Screw locking | |
| M25 | HP16B/H-SFH-2H-M25 | 19400161261 |
| M32 | HP16B/H-SFH-2H-M32 | 19400161262 |
| M40 | HP16B/H-SFH-2H-M40 | 19400161263 |
| PG21 | HP16B/H-SFH-2H-PG21 | 09400161261 |
| PG29 | HP16B/H-SFH-2H-PG29 | 09400161262 |
| PG36 | HP16B/H-SFH-2H-PG36 | 09400161263 |
| | 轴销联锁 Toggle locking | |
| M25 | HP16B/H-SFH-2T-M25 | 19400161281 |
| M32 | HP16B/H-SFH-2T-M32 | 19400161282 |
| M40 | HP16B/H-SFH-2T-M40 | 19400161283 |
| PG21 | HP16B/H-SFH-2T-PG21 | 09400161282 |
| PG29 | HP16B/H-SFH-2T-PG29 | 09400161283 |





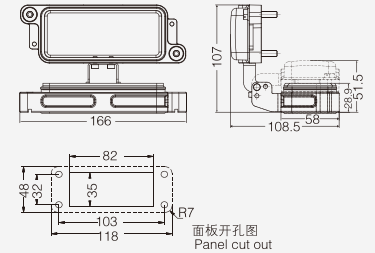
16B 高防护外壳 Hoods & Housings For Harsh Environmental Requirements

防护等级 Degree of protection : IP68

不封底下壳 Housings, bulkhead mounting



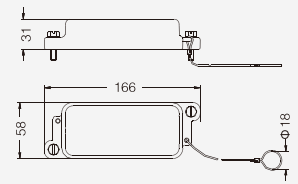
| 螺纹 Thread | 型号 Type | 订货号 Part Number |
|-----------|-----------------------|-----------------|
| --- | 螺栓联锁 Screw locking | |
| --- | HP16B/H-BK-2H | 09400160311 |
| --- | 轴销联锁 Toggle locking | |
| --- | HP16B/H-BK-2T | 09400160301 |
| --- | 带金属盖 With metal cover | |
| --- | 螺栓联锁 Screw locking | |
| --- | HP16B/H-BK-2H-MCV | 09400160317 |
| --- | 轴销联锁 Toggle locking | |
| --- | HP16B/H-BK-2T-MCV | 09400160307 |



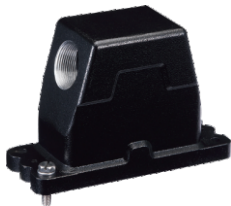
防护盖 Protection covers, metal



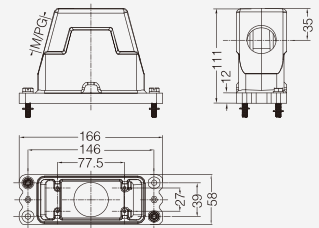
| 螺纹 Thread | 型号 Type | 订货号 Part Number |
|-----------|---------------------|-----------------|
| --- | 螺栓联锁 Screw locking | |
| --- | HP16B/H-MCV-2S | 09400165411 |
| --- | 轴销联锁 Toggle locking | |
| --- | HP16B/H-MCV-2T | 09400165401 |



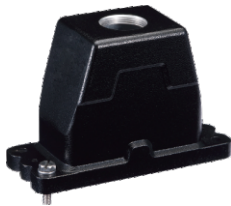
上壳 侧出线 高结构 Hoods, side entry, high construction



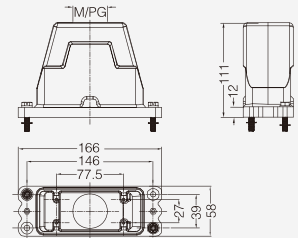
| 螺纹 Thread | 型号 Type | 订货号 Part Number |
|-----------|---------------------|-----------------|
| M25 | HP16B/H-SEH-4S-M25 | 19400161361 |
| M32 | HP16B/H-SEH-4S-M32 | 19400161362 |
| M40 | HP16B/H-SEH-4S-M40 | 19400161363 |
| PG21 | HP16B/H-SEH-4S-PG21 | 09400161362 |
| PG29 | HP16B/H-SEH-4S-PG29 | 09400161363 |



上壳 顶出线 高结构 Hoods, top entry, high construction



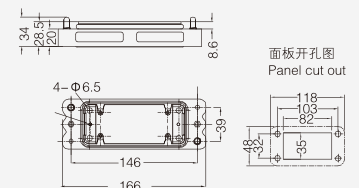
| 螺纹 Thread | 型号 Type | 订货号 Part Number |
|-----------|---------------------|-----------------|
| M25 | HP16B/H-TEH-4S-M25 | 19400161461 |
| M32 | HP16B/H-TEH-4S-M32 | 19400161462 |
| M40 | HP16B/H-TEH-4S-M40 | 19400161463 |
| M50 | HP16B/H-TEH-4S-M50 | 19400161464 |
| PG21 | HP16B/H-TEH-4S-PG21 | 09400161461 |
| PG29 | HP16B/H-TEH-4S-PG29 | 09400161462 |
| PG36 | HP16B/H-TEH-4S-PG36 | 09400161463 |



不封底下壳 Housings, bulkhead mounting



| 螺纹 Thread | 型号 Type | 订货号 Part Number |
|-----------|---------------|-----------------|
| --- | HP16B/H-BK-4H | 09400160202 |





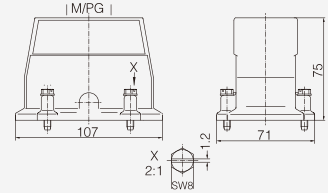
16B 高防护外壳 Hoods & Housings For Harsh Environmental Requirements

防护等级 Degree of protection : IP68

上壳 顶出线 高结构 Hoods, top entry, high construction EMC version



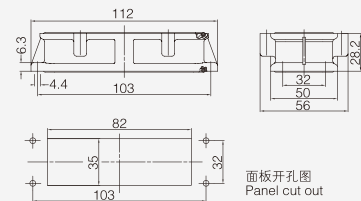
| 螺纹 Thread | 型号 Type | 订货号 Part Number |
|-----------|------------------------|-----------------|
| M32 | EMC · H16B-TEH-4S-M32 | 19620160442 |
| M40 | EMC · H16B-TEH-4S-M40 | 19620160443 |
| PG21 | EMC · H16B-TEH-4S-PG21 | 09620160540 |
| PG29 | EMC · H16B-TEH-4S-PG29 | 09620160541 |



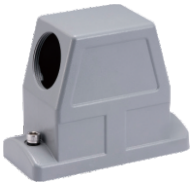
不封底下壳 Housings, bulkhead mounting EMC version



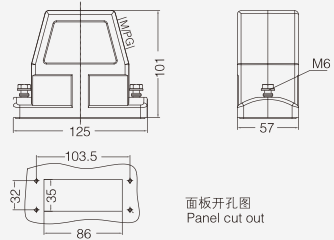
| 螺纹 Thread | 型号 Type | 订货号 Part Number |
|-----------|------------------|-----------------|
| --- | EMC · H16B-BK-4H | 09620160301 |



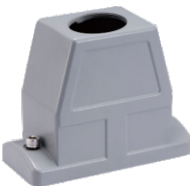
整体型外壳 侧出线 高结构 Hoods, side entry, high construction



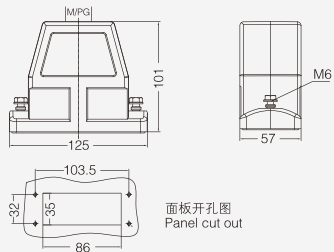
| 螺纹 Thread | 型号 Type | 订货号 Part Number |
|-----------|-------------------|-----------------|
| M25 | HC16B-SEH-2S-M32 | 19400161501 |
| M32 | HC16B-SEH-2S-M40 | 19400161502 |
| PG21 | HC16B-SEH-2S-PG21 | 09400161501 |
| PG29 | HC16B-SEH-2S-PG29 | 09400161502 |



整体型外壳 顶出线 高结构 Hoods, top entry, high construction



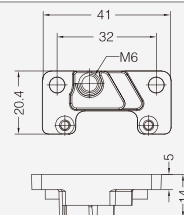
| 螺纹 Thread | 型号 Type | 订货号 Part Number |
|-----------|-------------------|-----------------|
| M32 | HC16B-TEH-2S-M32 | 19400161551 |
| M40 | HC16B-TEH-2S-M40 | 19400161552 |
| PG21 | HC16B-TEH-2S-PG21 | 09400161551 |
| PG29 | HC16B-TEH-2S-PG29 | 09400161552 |



芯体安装支块 Mounting frames



| 螺纹 Thread | 型号 Type | 订货号 Part Number |
|-----------|---------|-----------------|
| --- | APT-C | 09400161600 |





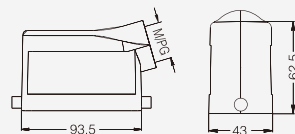
HV16B 金属外壳 适用高压插芯(HVE系列) Metal Hoods & Housings For High Voltage Inserts(HVE Series)

防护等级 Degree of protection : IP65

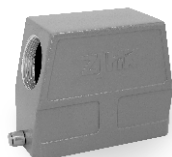
上壳 侧出线 Hoods, side entry



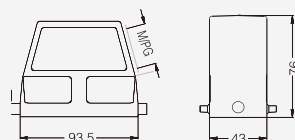
| 螺纹 Thread | 型号 Type | 订货号 Part Number |
|-----------|------------------|-----------------|
| M25 | HV16B-SE-2B-M25 | 19340161541 |
| M32 | HV16B-SE-2B-M32 | 19340161542 |
| PG21 | HV16B-SE-2B-PG21 | 09340161540 |



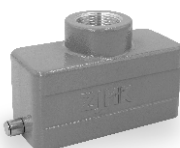
上壳 侧出线 高结构 Hoods, side entry, high construction



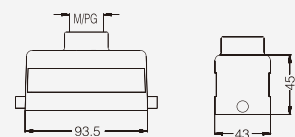
| 螺纹 Thread | 型号 Type | 订货号 Part Number |
|-----------|-------------------|-----------------|
| M32 | HV16B-SEH-2B-M32 | 19340160547 |
| M40 | HV16B-SEH-2B-M40 | 19340160548 |
| PG21 | HV16B-SEH-2B-PG21 | 09340160540 |
| PG29 | HV16B-SEH-2B-PG29 | 09340160541 |



上壳 顶出线 Hoods, top entry



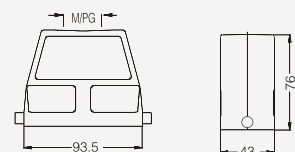
| 螺纹 Thread | 型号 Type | 订货号 Part Number |
|-----------|------------------|-----------------|
| M25 | HV16B-TE-2B-M25 | 19340161441 |
| M32 | HV16B-TE-2B-M32 | 19340161442 |
| PG21 | HV16B-TE-2B-PG21 | 09340161440 |



上壳 顶出线 高结构 Hoods, top entry, high construction



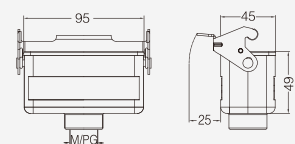
| 螺纹 Thread | 型号 Type | 订货号 Part Number |
|-----------|-------------------|-----------------|
| M32 | HV16B-TEH-2B-M32 | 19340160447 |
| M40 | HV16B-TEH-2B-M40 | 19340160448 |
| PG21 | HV16B-TEH-2B-PG21 | 09340160440 |
| PG29 | HV16B-TEH-2B-PG29 | 09340160441 |



飞线下壳 Housings, cable to cable



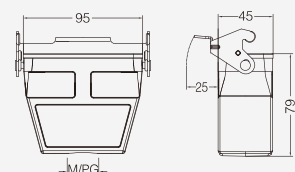
| 螺纹 Thread | 型号 Type | 订货号 Part Number |
|-----------|-------------------|-----------------|
| M25 | HV16B-CCT-1-M25 | 19340161751 |
| M32 | HV16B-CCT-1-M32 | 19340161752 |
| PG21 | HV16B-CCT-1L-PG21 | 09340161750 |



飞线下壳 高结构 Housings, cable to cable, high construction



| 螺纹 Thread | 型号 Type | 订货号 Part Number |
|-----------|--------------------|-----------------|
| M25 | HV16B-CCTH-1L-M32 | 19340160757 |
| M40 | HV16B-CCTH-1L-M40 | 19340160758 |
| PG21 | HV16B-CCTH-1L-PG21 | 09340160750 |
| PG29 | HV16B-CCTH-1L-PG29 | 09340160751 |



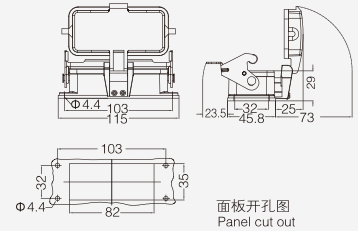
HV16B 金属外壳 适用高压插芯(HVE系列) Metal Hoods & Housings For HighVoltage Inserts(HVE Series)

防护等级 Degree of protection : IP65

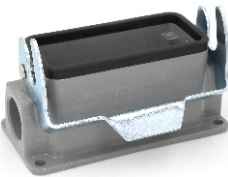
不封底下壳 Housings, bulkhead mounting



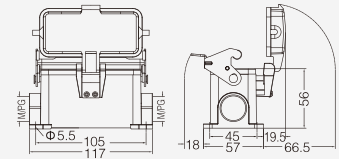
| 螺纹 Thread | 型号 Type | 订货号 Part Number |
|-----------|-------------------------|-----------------|
| --- | HV16B-BK-1L | 09340160307 |
| | 带塑料盖 With Plastic Cover | |
| --- | HV16B-BK-1L-CV | 09340160306 |
| | 带金属盖 With Metal Cover | |
| --- | HV16B-BK-1L-MCV | 09340160318 |



封底下壳 Housings, surface mounting



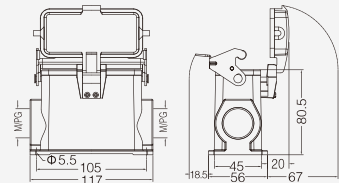
| 螺纹 Thread | 型号 Type | 订货号 Part Number |
|-----------|-------------------------|-----------------|
| M25 | HV16B-SF-1L-M25 | 19340161251 |
| 2M25 | HV16B-SF-1L-2M25 | 19340161291 |
| PG21 | HV16B-SF-1L-PG21 | 09340161250 |
| 2PG21 | HV16B-SF-1L-2PG21 | 09340161290 |
| | 带塑料盖 With Plastic Cover | |
| M25 | HV16B-SF-1L-CV-M25 | 19340161256 |
| 2M25 | HV16B-SF-1L-CV-2M25 | 19340161296 |
| PG21 | HV16B-SF-1L-CV-PG21 | 09340161255 |
| 2PG21 | HV16B-SF-1L-CV-2PG21 | 09340161295 |
| | 带金属盖 With Metal Cover | |
| M25 | HV16B-SF-1L-MCV-M25 | 19340162256 |
| 2M25 | HV16B-SF-1L-MCV-2M25 | 19340162296 |
| PG21 | HV16B-SF-1L-MCV-PG21 | 09340162255 |
| 2PG21 | HV16B-SF-1L-MCV-2PG21 | 09340162295 |



封底下壳 高结构 Housings, surface mounting, high construction



| 螺纹 Thread | 型号 Type | 订货号 Part Number |
|-----------|-------------------------|-----------------|
| M32 | HV16B-SFH-1L-M32 | 19340160252 |
| 2M25 | HV16B-SFH-1L-2M25 | 19340160291 |
| 2M32 | HV16B-SFH-1L-2M32 | 19340160292 |
| PG21 | HV16B-SFH-1L-PG21 | 09340160250 |
| 2PG21 | HV16B-SFH-1L-2PG21 | 09340160290 |
| PG29 | HV16B-SFH-1L-PG29 | 09340160251 |
| 2PG29 | HV16B-SFH-1L-2PG29 | 09340160291 |
| | 带塑料盖 With Plastic Cover | |
| M32 | HV16B-SFH-1L-CV-M32 | 19340160257 |
| 2M32 | HV16B-SFH-1L-CV-2M32 | 19340160297 |
| PG21 | HV16B-SFH-1L-CV-PG21 | 09340160255 |
| 2PG21 | HV16B-SFH-1L-CV-2PG21 | 09340160295 |
| PG29 | HV16B-SFH-1L-CV-PG29 | 09340160256 |
| 2PG29 | HV16B-SFH-1L-CV-2PG29 | 09340160296 |
| | 带金属盖 With Metal Cover | |
| M32 | HV16B-SFH-1L-MCV-M32 | 19340167257 |
| 2M32 | HV16B-SFH-1L-MCV-2M32 | 19340167297 |
| PG21 | HV16B-SFH-1L-MCV-PG21 | 09340162257 |
| 2PG21 | HV16B-SFH-1L-MCV-2PG21 | 09340162297 |
| PG29 | HV16B-SFH-1L-MCV-PG29 | 09340162258 |
| 2PG29 | HV16B-SFH-1L-MCV-2PG29 | 09340162298 |





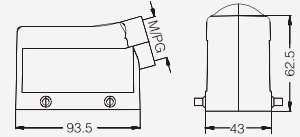
HV16B 金属外壳 适用高压插芯(HVE系列) Metal Hoods & Housings For High Voltage Inserts(HVE Series)

防护等级 Degree of protection : IP65

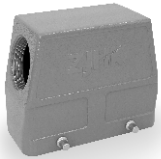
上壳 侧出线 Hoods, side entry



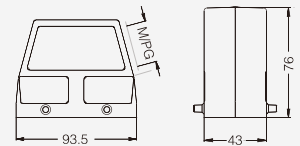
| 螺纹 Thread | 型号 Type | 订货号 Part Number |
|-----------|------------------|-----------------|
| M25 | HV16B-SE-4B-M25 | 19340160521 |
| M32 | HV16B-SE-4B-M32 | 19340160522 |
| PG21 | HV16B-SE-4B-PG21 | 09340160522 |



上壳 侧出线 高结构 Hoods, side entry, high construction



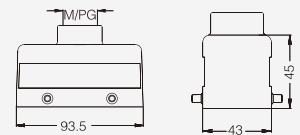
| 螺纹 Thread | 型号 Type | 订货号 Part Number |
|-----------|-------------------|-----------------|
| M32 | HV16B-SEH-4B-M32 | 19340160552 |
| M40 | HV16B-SEH-4B-M40 | 19340160553 |
| PG21 | HV16B-SEH-4B-PG21 | 09340160552 |
| PG29 | HV16B-SEH-4B-PG29 | 09340160553 |



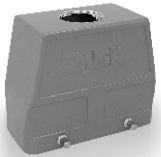
上壳 顶出线 Hoods, top entry



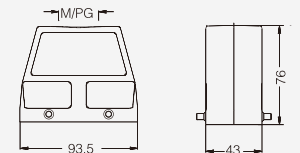
| 螺纹 Thread | 型号 Type | 订货号 Part Number |
|-----------|------------------|-----------------|
| M25 | HV16B-TE-4B-M25 | 19340160421 |
| PG21 | HV16B-TE-4B-PG21 | 19340160422 |



上壳 顶出线 高结构 Hoods, top entry, high construction



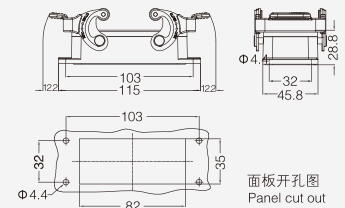
| 螺纹 Thread | 型号 Type | 订货号 Part Number |
|-----------|-------------------|-----------------|
| M32 | HV16B-TEH-4B-M32 | 19340160452 |
| M40 | HV16B-TEH-4B-M40 | 19340160453 |
| PG21 | HV16B-TEH-4B-PG21 | 09340160452 |
| PG29 | HV16B-TEH-4B-PG29 | 09340160453 |



不封底下壳 Housings, bulkhead mounting



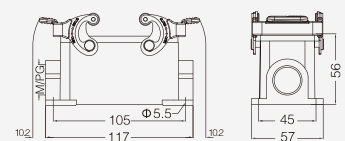
| 螺纹 Thread | 型号 Type | 订货号 Part Number |
|-----------|-------------|-----------------|
| --- | HV16B-BK-2L | 09340160301 |



封底下壳 Housings, surface mounting



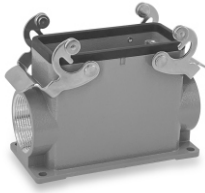
| 螺纹 Thread | 型号 Type | 订货号 Part Number |
|-----------|-------------------|-----------------|
| M25 | HV16B-SF-2L-M25 | 19340160271 |
| 2M25 | HV16B-SF-2L-2M25 | 19340160275 |
| PG21 | HV16B-SF-2L-PG21 | 09340160272 |
| 2PG21 | HV16B-SF-2L-2PG21 | 09340160276 |



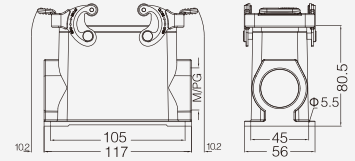
HV16B 金属外壳 适用高压插芯(HVE系列) Metal Hoods & Housings For HighVoltage Inserts(HVE Series)

防护等级 Degree of protection : IP65

封底下壳 高结构 Housings, surface mounting, high construction



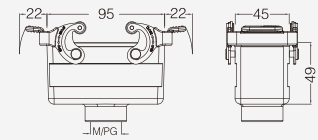
| 螺纹 Thread | 型号 Type | 订货号 Part Number |
|-----------|--------------------|-----------------|
| M32 | HV16B-SFH-2L-M32 | 19340160232 |
| 2M32 | HV16B-SFH-2L-2M32 | 19340160272 |
| PG21 | HV16B-SFH-2L-PG21 | 09340160230 |
| 2PG21 | HV16B-SFH-2L-2PG21 | 09340160270 |
| PG29 | HV16B-SFH-2L-PG29 | 09340160231 |
| 2PG29 | HV16B-SFH-2L-2PG29 | 09340160271 |



飞线下壳 Housings, cable to cable



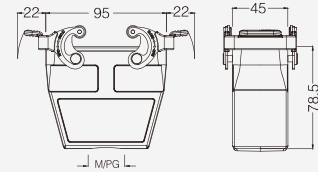
| 螺纹 Thread | 型号 Type | 订货号 Part Number |
|-----------|-------------------|-----------------|
| M25 | HV16B-CCT-2L-M25 | 19340160731 |
| M32 | HV16B-CCT-2L-M32 | 19340160732 |
| PG21 | HV16B-CCT-2L-PG21 | 09340160732 |



飞线下壳 高结构 Housings, cable to cable, high construction



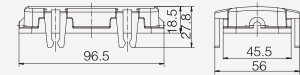
| 螺纹 Thread | 型号 Type | 订货号 Part Number |
|-----------|--------------------|-----------------|
| M32 | HV16B-CCTH-2L-M32 | 19340160737 |
| M40 | HV16B-CCTH-2L-M40 | 19340160738 |
| PG21 | HV16B-CCTH-2L-PG21 | 09340160730 |
| PG29 | HV16B-CCTH-2L-PG29 | 09340160731 |



塑料防护盖 4卡扣 Protection covers, plastic



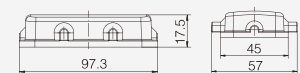
| 接线方式 Connect way | 描述 Applications | 型号 Type | 订货号 Part Number |
|------------------|-------------------|------------|-----------------|
| --- | 用于上壳 For hoods | H16B-CV-4C | 09300165401 |



塑料防护盖 Protection covers, plastic



| 接线方式 Connect way | 描述 Applications | 型号 Type | 订货号 Part Number |
|------------------|---|--------------|-----------------|
| | 塑料盖/用于飞线下壳 For Housings,cable to cable | H16B-CV-4B/1 | 09300165427 |
| | 塑料盖/用于不封底,封底下壳 For housing,bulkhead/ surface mounting | H16B-CV-4B/2 | 09300165428 |





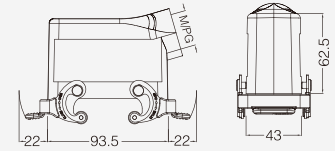
HV16B 金属外壳 适用高压插芯(HVE系列) Metal Hoods & Housings For High Voltage Inserts(HVE Series)

防护等级 Degree of protection : IP65

上壳 侧出线 Hoods, side entry



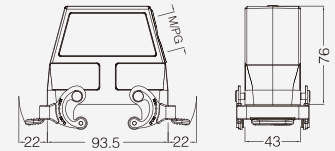
| 螺纹 Thread | 型号 Type | 订货号 Part Number |
|-----------|------------------|-----------------|
| M25 | HV16B-SE-2L-M25 | 19340161531 |
| M32 | HV16B-SE-2L-M32 | 19340161532 |
| PG21 | HV16B-SE-2L-PG21 | 09340161530 |



上壳 侧出线 高结构 Hoods, side entry, high construction



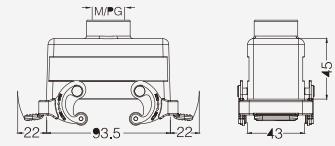
| 螺纹 Thread | 型号 Type | 订货号 Part Number |
|-----------|-------------------|-----------------|
| M32 | HV16B-SEH-2L-M32 | 19340160537 |
| M40 | HV16B-SEH-2L-M40 | 19340160538 |
| PG21 | HV16B-SEH-2L-PG21 | 09340160530 |
| PG29 | HV16B-SEH-2L-PG29 | 09340160531 |



上壳 顶出线 Hoods, top entry



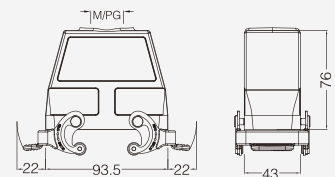
| 螺纹 Thread | 型号 Type | 订货号 Part Number |
|-----------|------------------|-----------------|
| M25 | HV16B-TE-2L-M25 | 19340161431 |
| M32 | HV16B-TE-2L-M32 | 19340161432 |
| PG21 | HV16B-TE-2L-PG21 | 09340161430 |



上壳 顶出线 高结构 Hoods, top entry, high construction



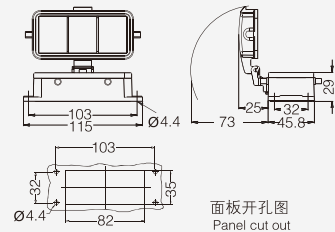
| 螺纹 Thread | 型号 Type | 订货号 Part Number |
|-----------|-------------------|-----------------|
| M32 | HV16B-TEH-2L-M32 | 19340160437 |
| M40 | HV16B-TEH-2L-M40 | 19340160438 |
| PG21 | HV16B-TEH-2L-PG21 | 09340160430 |
| PG29 | HV16B-TEH-2L-PG29 | 09340160431 |



不封底下壳 Housings, bulkhead mounting



| 螺纹 Thread | 型号 Type | 订货号 Part Number |
|-----------|-------------------------|-----------------|
| --- | HV16B-BK-4B | 09340160300 |
| --- | 带塑料盖 with plastic cover | |
| --- | HV16B-BK-4B-CV | 09340160302 |
| --- | 带金属盖 with metal cover | |
| --- | HV16B-BK-4B-MCV | 09340160317 |



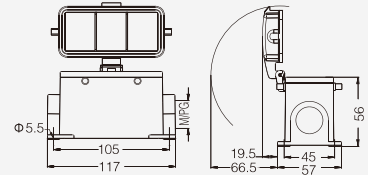
HV16B 金属外壳 适用高压插芯(HVE系列) Metal Hoods & Housings For HighVoltage Inserts(HVE Series)

防护等级 Degree of protection : IP65

封底下壳 Housings, surface mounting



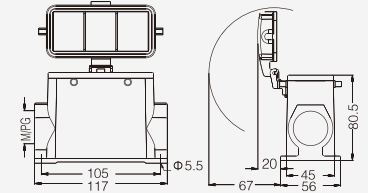
| 螺纹 Thread | 型号 Type | 订货号 Part Number |
|-----------|-------------------------|-----------------|
| M25 | HV16B-SF-4B-M25 | 19340161126 |
| 2M25 | HV16B-SF-4B-2M25 | 19340161166 |
| PG21 | HV16B-SF-4B-PG21 | 09340161120 |
| 2PG21 | HV16B-SF-4B-2PG21 | 09340161160 |
| | 带塑料盖 With Plastic Cover | |
| M25 | HV16B-SF-4B-CV-M25 | 19340161226 |
| 2M25 | HV16B-SF-4B-CV-2M25 | 19340161266 |
| PG21 | HV16B-SF-4B-CV-PG21 | 09340161220 |
| 2PG21 | HV16B-SF-4B-CV-2PG21 | 09340161260 |
| | 带金属盖 With Metal Cover | |
| M25 | HV16B-SF-4B-MCV-M25 | 19340162226 |
| 2M25 | HV16B-SF-4B-MCV-2M25 | 19340162266 |
| PG21 | HV16B-SF-4B-MCV-PG21 | 09340162220 |
| 2PG21 | HV16B-SF-4B-MCV-2PG21 | 09340162260 |



封底下壳 高结构 Housings, surface mounting, high construction



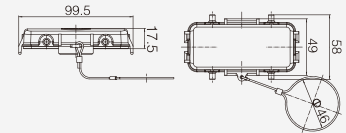
| 螺纹 Thread | 型号 Type | 订货号 Part Number |
|-----------|-------------------------|-----------------|
| M32 | HV16B-SFH-4B-M32 | 19340160127 |
| 2M32 | HV16B-SFH-4B-2M32 | 19340160167 |
| PG21 | HV16B-SFH-4B-PG21 | 09340160120 |
| 2PG21 | HV16B-SFH-4B-2PG21 | 09340160160 |
| PG29 | HV16B-SFH-4B-PG29 | 09340160121 |
| 2PG29 | HV16B-SFH-4B-2PG29 | 09340160161 |
| | 带塑料盖 With Plastic Cover | |
| M32 | HV16B-SFH-4B-CV-M32 | 19340160227 |
| 2M32 | HV16B-SFH-4B-CV-2M32 | 19340160267 |
| PG21 | HV16B-SFH-4B-CV-PG21 | 09340160220 |
| 2PG21 | HV16B-SFH-4B-CV-2PG21 | 09340160260 |
| PG29 | HV16B-SFH-4B-CV-PG29 | 09340160221 |
| 2PG29 | HV16B-SFH-4B-CV-2PG29 | 09340160261 |
| | 带金属盖 With Metal Cover | |
| M32 | HV16B-SFH-4B-MCV-M32 | 19340160327 |
| 2M32 | HV16B-SFH-4B-MCV-2M32 | 19340160367 |
| PG21 | HV16B-SFH-4B-MCV-PG21 | 09340160320 |
| 2PG21 | HV16B-SFH-4B-MCV-2PG21 | 09340160360 |
| PG29 | HV16B-SFH-4B-MCV-PG29 | 09340160321 |
| 2PG29 | HV16B-SFH-4B-MCV-2PG29 | 09340160361 |



防护盖 Protection covers, metal



| 接线方式 Connect way | 描述 Applications | 型号 Type | 订货号 Part Number |
|------------------|----------------------------|---------------|-----------------|
| | 金属保护盖/用于上壳 For hoods | H16B-MCV-4B/1 | 09340165426 |
| | 金属保护盖/用于下壳 For housings | H16B-MCV-4B/2 | 09340165425 |



防护盖 Protection covers, metal



| 接线方式 Connect way | 描述 Applications | 型号 Type | 订货号 Part Number |
|------------------|----------------------------|----------------|-----------------|
| | 金属保护盖/用于上壳 For hoods | H16B-MCV-2L.1S | 09340165422 |
| | 金属保护盖/用于下壳 For housings | H16B-MCV-2L.2S | 09340165423 |

