

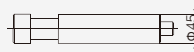


附件/框架 Accessories

编码 Coding

编码销 Code pin

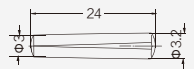
型号 Designation	订货号 Part Number
CODE-E	09330009954



- ① 使用此编码销, 可避免相同连接器的误插
 ② 适用于HEC, HEE, HE-5/0, HM-006, HM-008
 ③ 使用编码销时, 公插对应孔不能装插针
- ① Use of the coding pin prevents incorrect mating to other connectors of the same type.
 For HEC, HEE, HE-5/0, HM-006, HM-008
 The male pin should be omitted from the opposing cavity in the male insert.

编码销 Code pin

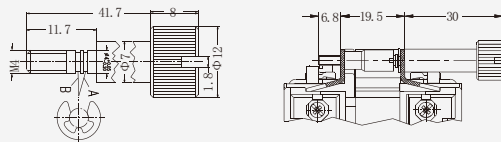
型号 Designation	订货号 Part Number
CODE-D	09330009915



- ① 使用此编码销, 可避免相同连接器的误插
 ② 适用于HD, HDD, HMD-012, HMDD-017, HQ-7/0, HQ-012/0
 ③ 使用编码销时, 公插对应孔不能装插针
- ① Use of the coding pin prevents incorrect mating to other connectors of the same type.
 For HD, HDD, HMD-012, HMDD-017, HQ-7/0, HQ-012/0
 The male pin should be omitted from the opposing cavity in the male insert.

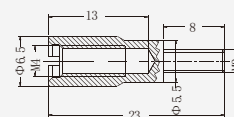
滚花螺栓 Screw pin

型号 Designation	订货号 Part Number
GH-M4	09330009910



套筒螺栓 Screw bash

型号 Designation	订货号 Part Number
GHT-M3	09330009912





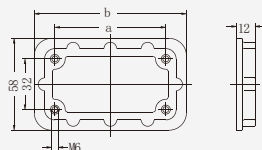
固定框架 frame

安装架 Mounting

用于H version
for H version housings



规格 Size	型号 Designation	订货号 Part Number
6B	HP6B-MF	09400009921
10B	HP10B-MF	09400009922
16B	HP16B-MF	09400009923
24B	HP24B-MF	09400009924



规格 Size	a	b
6B	70	96
10B	83	109
16B	103	129
24B	130	156

对接架 Docking frame



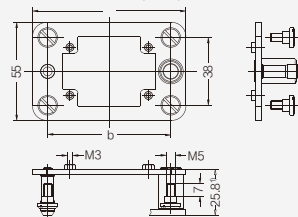
规格 Size	型号 Designation	订货号 Part Number
6B	H6B-ADK	09300061701
10B	H10B-ADK	09300101701
16B	H16B-ADK	09300161701
24B	H24B-ADK	09300241701

技术参数 Technical characteristics

材料 Material
 -对接架 Docking frame 不锈钢 stainless steel
 -固定螺栓 Fixing screws 铁, 镀锌 steel, zinc-plated

插入容差 Pull-in-range
 -x轴 x-axis $\pm 1.5\text{mm}$
 -y轴 y-axis $\pm 1.5\text{mm}$
 拔插次数 Mechanical working life ≥ 500

安装开口 Assembly cut put



1) 距离 电气针和光电缆距离最大27mm
 气动针距离最大26.5mm
 Distance for electrical and F.O. contacts max. 27 mm; for pneumatic contacts max. 26.5 mm

产品包括 Range of delivery:

1个架子 1 frame
 4个带平头的螺栓, 用于固定对接架
 4 cheese head shoulder screws
 to fix the docking frame

规格 Size	a	b	c	d	e
6B	86	69	69	54.5	84
10B	99	82	82	67.5	97
16B	119.5	102.5	102.5	88	117.5
24B	146	129	129	114.5	144

